

cubicle & washroom

2008
collection

*Polyrey HPL
Polyrey Compact
Panoprey MFC*



colour selector

cubicle & washroom collection

Polyrey HPL & Panoprey MFC

Decor available in Panoprey,
Melamine Faced Chipboard.



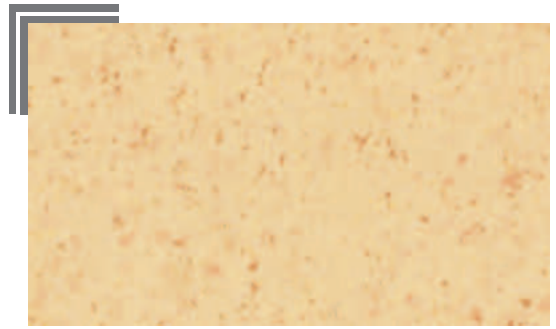
B 070
Blanc Mégève FA



F 008
Fumée FA



B 012
Blanc Antique FA



M 077
Myriade Jaune SURF



B 015
Blanc Menuires FA



G 044
Gris Dauphin FA



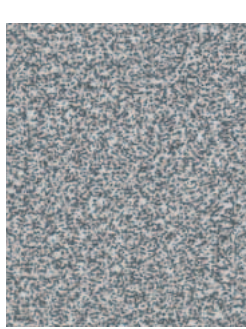
C 017
Coquille d'Œuf FA



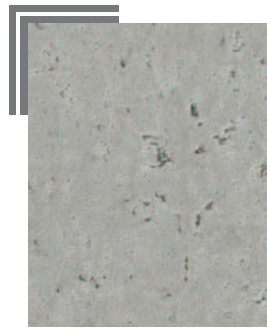
M 001
Maryland Clair SURF



G 029
Gris Tourterelle FA



M 002
Maryland Moyen SURF



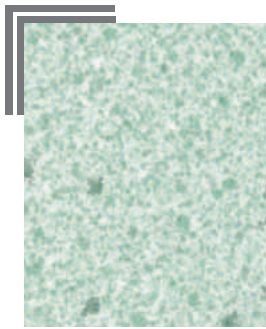
B 057
Béton Naturel FA



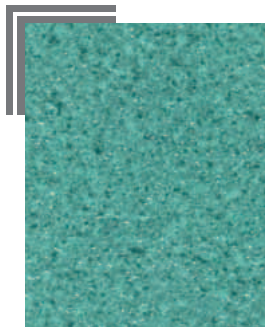
V 011
Vert d'Eau FA



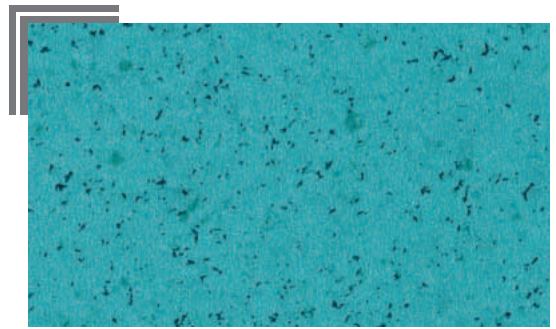
A 014
Aigue-Marine FA



C 031
Cosmic Vert SURF



N 028
Nova Mousse SURF



M 079
Myriade Vert SURF



A 036
Amandine FA



N 022
Nova Lilas SURF



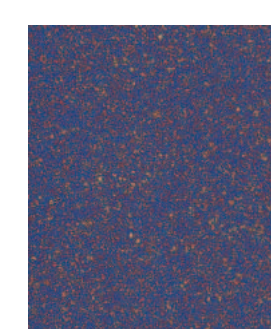
N 023
Nova Saphir SURF



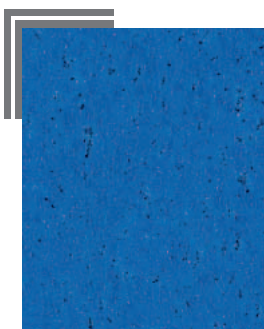
B 001
Bleu Flash FA



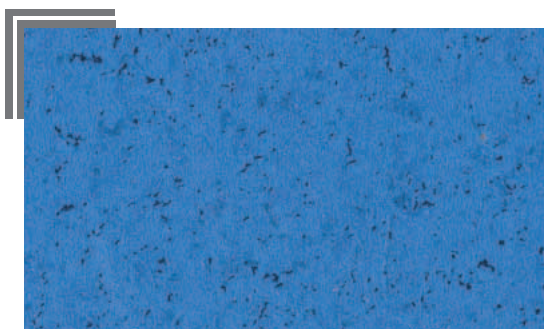
B 048
Bleu Oslo FA



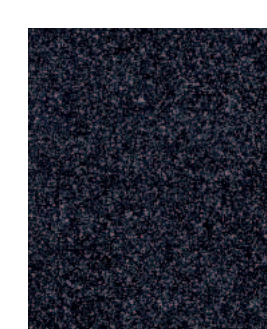
V 050
Volans Bleu FA



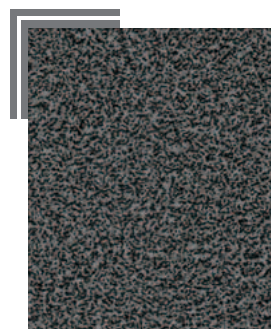
B 052
Béton Bleu FA



M 076
Myriade Bleu SURF



V 032
Vega Noir FA



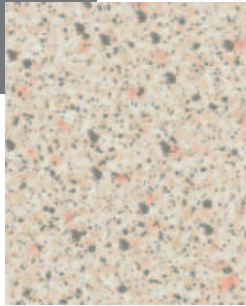
M 003
Maryland Foncé SURF

Polyrey HPL & Panoprey MFC

Decor available in Panoprey,
Melamine Faced Chipboard.

**samples
express
information**

Tel: +44 (0) 1923 202700
Fax: +44 (0) 1923 202729



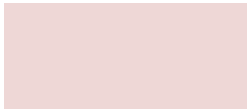
C 030
Cosmic Beige SURF



E 028
Erable Nordique FA



N 027
Noyer Vénitien FA



P 053
Pétale de Rose FA



C 032
Cosmic Rose SURF



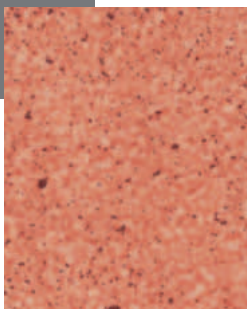
R 021
Rose Tendre FA



P 067
Poirier Naturel FA



N 026
Noyer Ombré FA



N 049
Nova Argile SURF



V 014
Vinyte FA



H 025
Pommier de Honfleur FA



Z 009
Zebano Ambré FA



C 062
Capucine FA



J 018
Jaune Gouache FA



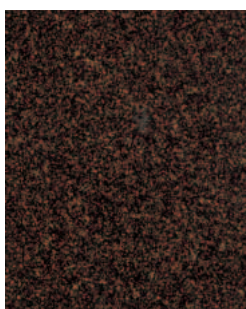
R 036
Rouge Cerise FA



G 031
Genêt FA



V 052
Volans Rouge FA



V 051
Volans Noir FA

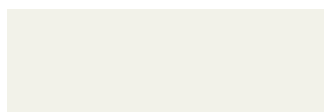


A 057
Aulne Naturel FA



B 101
Banian Noirci FA

Compact - Solid grade laminate



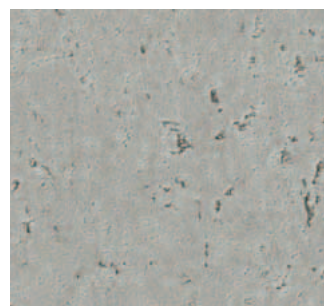
B 015
Blanc Menuires FA



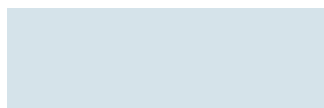
M 001
Maryland Clair FA



G 029
Gris Tourterelle FA



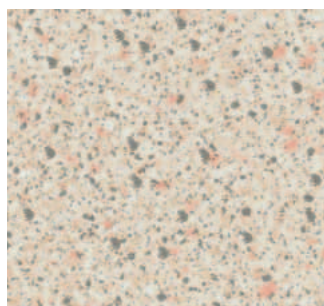
B 057
Béton Naturel FA



F 008
Fumée FA



G 003
Gris Perle FA



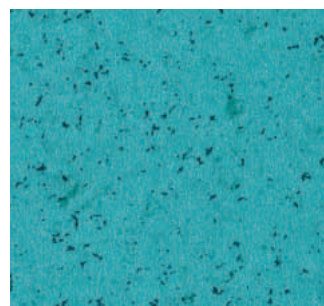
C 030
Cosmic Beige FA



M 077
Myriade Jaune FA



C 017
Coquille d'Œuf FA



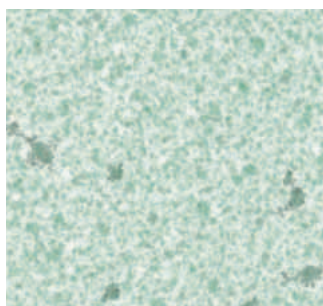
M 079
Myriade Vert FA



G 031
Genêt FA



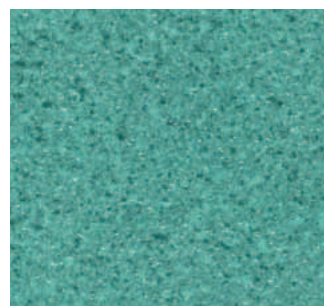
A 014
Aigue-Marine FA



C 031
Cosmic Vert FA



A 036
Amandine FA



N 028
Nova Mousse FA



V 011
Vert d'Eau FA



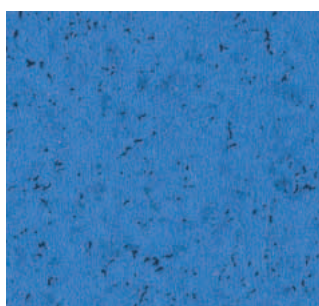
M 047
Mousse FA



N 022
Nova Lilas FA



B 048
Bleu Oslo FA



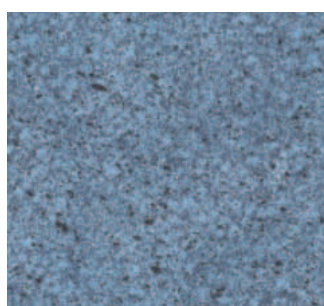
M 076
Myriade Bleu FA



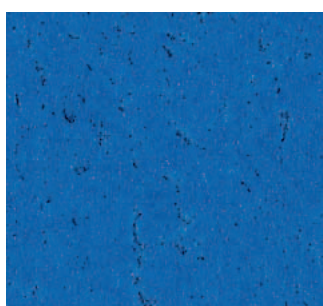
B 001
Bleu Flash FA



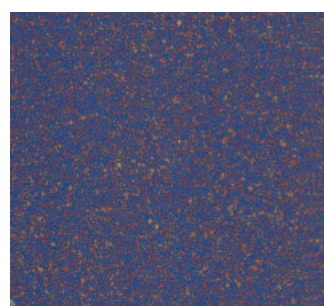
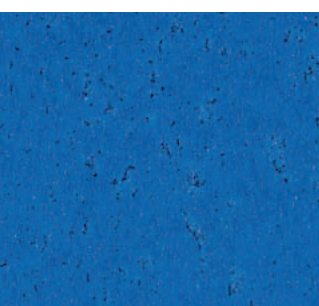
B 086
Bleu Caraïbes FA



N 023
Nova Saphir FA

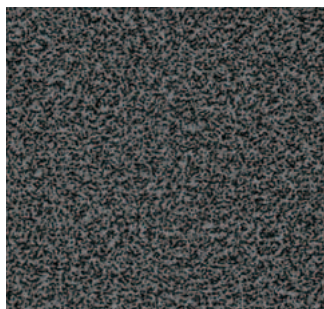


B 052
Béton Bleu FA



V 050
Volans Bleu FA

Compact - Solid grade laminate



M 003
Maryland Foncé FA



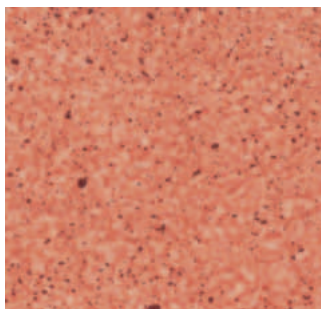
C 032
Cosmic Rose FA



E 028
Erable Nordique FA



C 062
Capucine FA



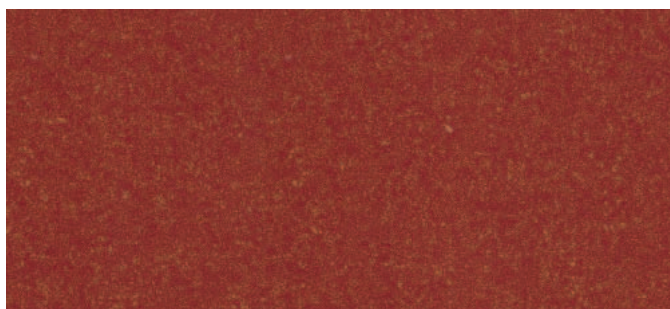
N 049
Nova Argile FA



H 025
Pommier de Honfleur FA



R 036
Rouge Cerise FA



V 052
Volans Rouge FA



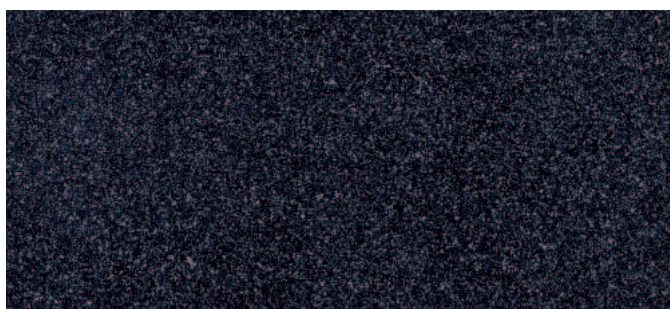
A 057
Aulne Naturel FA



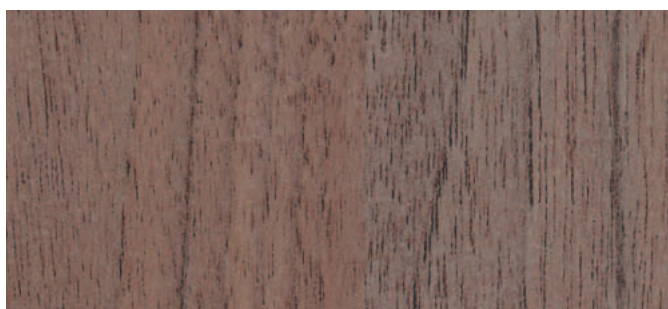
V 051
Volans Noir FA



N 027
Noyer Vénitien FA



V 032
Vega Noir FA



N 026
Noyer Ombré FA




cubicle & washroom collection

Find out more

All decors featured are available ex-stock from our nationwide network of distributors.

All products are available in other sheet sizes and thicknesses.

Please contact the Polyrey UK sales office for details.

				Essential products						
				Product	 Postforming grade HPL			 Solid grade laminate		 Melamine faced chipboard
plain colours				Brand	POLYREY HPL			COMPACT		PANOPREY
				Size cm	412 x 151	432 x 166	366 x 151	260 x 186	366 x 151	280 x 207
				Thickness mm	0.8	0.8	0.8	12.5	12.5	19
Code	Name	Nearest NCS ref.	Nearest BS ref.	Finish			Finish		Finish	
A 014	Aigue-Marine	S 1010-G	14C31 (L)		FA	FA	FA	FA	FA	
A 036	Amandine	S1030-G10Y	14C33 (L) / 14D41 (D)		FA	FA	FA	FA	FA	
B 001	Bleu Flash <i>New</i>	S 2065-R90B	20E53 (G)		FA	FA	FA	FA	FA	
B 012	Blanc Antique	S 0603-G80Y	10B15 (D)		FA	FA				
B 015	Blanc Menuires	S 0502-G50Y	00E55 (G)		FA	FA	FA	FA	FA	
B 048	Bleu Oslo	S 1030-R80B	20D41 (D)		FA	FA	FA	FA	FA	
B 070	Blanc Mégève	S 0500-N	10A01 (G)		FA	FA				
B 086	Bleu Caraïbes	S 4050-R80B	–		FA	FA	FA	FA	FA	
C 017	Coquille d'Oeuf	S 0907-Y30R	08C31 (G)		FA	FA	FA	FA	FA	
C 062	Capucine <i>New</i>	S 1080-Y90R	04E53 (G)		FA	FA	FA	FA	FA	
F 008	Fumée <i>New</i>	S 1010-R80B	22C31 (L)		FA	FA	FA	FA	FA	
G 003	Gris Perle	S 3005-R80B	18B19 (L)		FA	FA	FA	FA	FA	
G 029	Gris Tourterelle	S 1502-B	22B17 (D)		FA	FA	FA	FA	FA	
G 031	Genêt	S 0560-Y20R	–		FA	FA	FA	FA	FA	
G 044	Gris Dauphin	S 2000-N	02A03 (L)		FA	FA				
J 018	Jaune Gouache <i>New</i>	S 1050-Y10R	–		FA	FA				
M 047	Mousse	S 3020-B70G	16C35 (L)		FA	FA	FA	FA	FA	
P 053	Pétale de Rose	S 0907- R10B	04B15 (G)		FA	FA				
R 021	Rose Tendre	S 1515-R40B	24C33 (L)		FA	FA				
R 036	Rouge Cerise	S 2570-Y90R	04E56 (L)		FA	FA	FA	FA		
V 011	Vert d'Eau	S 0520-B30G	16C33 (D)		FA	FA	FA	FA	FA	
V 014	Vinyle <i>New</i>	S 1060-Y50R	06E51 (D)		FA	FA			FA	
woodgrains										
A 057	Aulne Naturel				FA			FA		
B 101	Banien Noirci <i>New</i>				FA					
E 028	Erable Nordique				FA			FA		
H 025	Pommier de Honfleur				FA			FA		
N 026	Noyer Ombré <i>New</i>				FA			FA		
N 027	Noyer Vénitien <i>New</i>				FA			FA		
P 067	Poirier Naturel				FA					
Z 009	Zebrano Ambré <i>New</i>				FA					
patterns										
B 052	Béton Bleu <i>New</i>				FA		FA	FA	FA	
B 057	Béton Naturel <i>New</i>				FA		FA	FA	FA	
C 030	Cosmic Beige			SURF			FA	FA	SURF	
C 031	Cosmic Vert			SURF			FA	FA	SURF	
C 032	Cosmic Rose <i>New</i>			SURF			FA	FA	SURF	
M 001	Maryland Clair			SURF			FA	FA	SURF	
M 002	Maryland Moyen			SURF						
M 003	Maryland Foncé			SURF				FA	SURF	
M 076	Myriade Bleu <i>New</i>			SURF			FA	FA	SURF	
M 077	Myriade Jaune <i>New</i>			SURF			FA	FA	SURF	
M 079	Myriade Vert <i>New</i>			SURF			FA	FA	SURF	
N 022	Nova Lilas			SURF			FA	FA	SURF	
N 023	Nova Saphir			SURF			FA	FA	SURF	
N 028	Nova Mousse			SURF			FA	FA	SURF	
N 049	Nova Argile			SURF			FA	FA	SURF	
V 032	Vega Noir				FA			FA		
V 050	Volans Bleu				FA			FA		
V 051	Volans Noir				FA			FA		
V 052	Volans Rouge				FA			FA		

Polyrey reserves the right to change specifications at any time, without notice.

NCS - NATURAL COLOR SYSTEM, copyright and trademark property of and used on license from the Scandinavian Colour Institute AB, SCI - Sweden, Stockholm 1999. (See your local NCS distributor for original NCS standard colour samples).

Colour match to Polyrey decor : G = Good, L = Lighter, D = Darker

cubicle & washroom collection

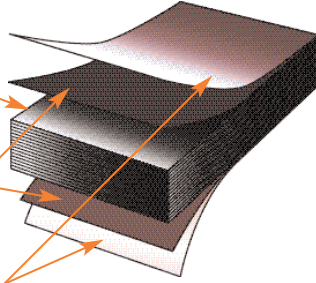
Polyrey High Pressure Laminate, Polyrey Compact Solid Grade Laminate and Panoprey Melamine Faced Chipboard – A complete product offer to meet the requirements of most applications within a cubicle and washroom environment (cubicles, partitions, lockers).

Compact Solid Grade Laminate

Black core composed of kraft papers impregnated with phenolic resin.

Decorative paper impregnated with melamine resin.

Protective surface impregnated with melamine resin (overlay) for printed decors.



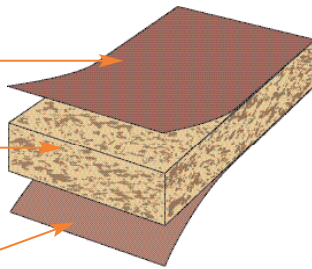
- Exceptional resistance to water and impact.
- The ideal product for demanding, high traffic environments such as swimming pools, changing rooms and shower areas.
- Meets the highest hygiene and sterility requirements due to its non-porous edges and inert surface. Allows for easy cleaning and maintenance.

Panoprey MFC Melamine Faced Chipboard

Decorative paper impregnated with melamine resin.

Chipboard core.

Decorative paper impregnated with melamine resin.



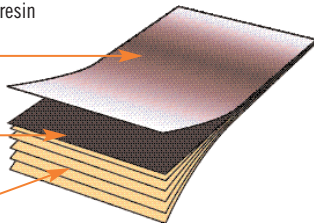
- Chipboard with 2 melamine faces offering high resistance to humidity.
- Moisture resistant grade offering a higher resistance to humidity
- Cost-effective solution for all non-wet area applications.
- All decors available in HPL for vanity units.

Polyrey HPL High Pressure Laminate

Protective surface impregnated with melamine resin (overlay) for printed decors.

Decorative paper, printed or deep dyed plain colour, impregnated with melamine resin.

Layers of kraft paper impregnated with phenolic resin.



- High impact and scratch resistance.
- 4+ metre sheets for cubicle partitions up to 166cm deep (Disability Discrimination Act 2004).
- 366 x 151cm sheets available for standard size 180 x 150cm partitions.

Get more from Polyrey

For more information, please ask for the following brochures:

- Vanity Units range (Postformed Compact).
- Lockers range (10mm Compact).
- Compact fabrication guidelines.
- 2007-2012 collection.
- The guide (decor availability and technical information).



Tel: +44 (0) 1923 202700
Fax: +44 (0) 1923 202729

Building Regulations Part M / Disability Discrimination Act

The Building Regulations Part M, in conjunction with the Disability Discrimination Act 2004, detail the need for certain surfaces within the cubicle and washroom environment to contrast visually within set parameters.

The current legislation requires that the jointing surfaces have a difference of 30 points between their Light Reflectance Value.

While responsibility lies with the specifiers to select decors that ensure compliance, the table below shows luminescence values by decor which will enable system manufacturers to offer guidance if requested.

Reference	Decor Name	Luminescence Value
A 014	Aigue-Marine	0.73
A 036	Amandine	0.58
A 057	Aulne Naturel	0.43
B 001	Bleu Flash	0.15
B 012	Blanc Antique	0.85
B 015	Blanc Menuires	0.87
B 048	Bleu Oslo	0.52
B 052	Béton Bleu	0.17
B 057	Béton Naturel	0.48
B 070	Blanc Mégève	0.83
B 086	Bleu Caraïbes	0.10
B 101	Baniam Noirci	0.01
C 017	Coquille d'Oeuf	0.68
C 030	Cosmic Beige	0.57
C 031	Cosmic Vert	0.59
C 032	Cosmic Rose	0.57
C 062	Capucine	0.19
E 028	Erable Nordique	0.51
F 008	Fumée	0.68
G 003	Gris Perle	0.41
G 029	Gris Tourterelle	0.53
G 031	Genêt	0.58
G 044	Gris Dauphin	0.55
H 025	Pommier de Honfleur	0.46
J 018	Jaune Gouache	0.64
M 001	Maryland Clair	0.55
M 002	Maryland Moyen	0.27
M 003	Maryland Foncé	0.13
M 047	Mousse	0.34
M 076	Myriade Bleu	0.22
M 077	Myriade Jaune	0.58
M 079	Myriade Vert	0.28
N 022	Nova Lilas	0.54
N 023	Nova Saphir	0.23
N 026	Noyer Ombré	0.17
N 027	Noyer Vénitien	0.30
N 028	Nova Mousse	0.33
N 049	Nova Argile	0.31
P 053	Pétale de Rose	0.75
P 067	Poirier Naturel	0.35
R 021	Rose Tendre	0.58
R 036	Rouge Cerise	0.13
V 011	Vert d'Eau	0.66
V 014	Vinyle	0.37
V 032	Vega Noir	0.11
V 050	Volans Bleu	0.55
V 051	Volans Noir	0.11
V 052	Volans Rouge	0.14
Z 009	Zebrano Ambré	0.15

Should you require any further assistance please contact Polyrey UK



Tel: +44 (0) 1923 202700
 Fax: +44 (0) 1923 202720
 E-mail: polyrey.uk@polyrey.com
 Internet: www.polyrey.com



49 Clarendon Road · WATFORD WD17 1HP · UK